



Part Numbers: M-5200-F1550DEBA/ECA/EFA/SBA/SCA/SFA/TBA/TCA/TFA
M-5200-F1535DEBA/ECA/EFA/SBA/SCA/SFA/TBA/TCA/TFA
2018 F-150 5.0L/3.5L Cat Back Exhaust System Rear Exit
INSTALLATION INSTRUCTIONS

Please visit www.fordracingparts.com for the most current instruction information

!!! PLEASE READ ALL OF THE FOLLOWING INSTRUCTIONS CAREFULLY PRIOR TO
INSTALLATION.

AT ANY TIME YOU DO NOT UNDERSTAND THE INSTRUCTIONS, PLEASE CALL THE FORD RACING
TECHLINE AT 1-800-367-3788 !!!

OVERVIEW:

The use of a floor hoist is recommended for this installation. If you do not have access to one, use a hydraulic floor jack and jack stands to raise the vehicle.

!! CAUTION: JACK STANDS MUST BE USED ON A LEVEL SURFACE AND BE SECURELY SEATED. FAILURE TO DO SO MAY RESULT IN PERSONAL INJURY OR VEHICLE DAMAGE! !

Base Kit Includes:

<u>Find No.</u>	<u>Qty:</u>	<u>Description</u>
1	1	Front section 145"WB
2	1	S-Pipe
3	1	Mid-Muffler section
4	1	L/H intermediate tailpipe
5	1	L/H tailpipe
6	1	R/H tailpipe
7	2	Brackets
8	2	Rubber Isolators
9	3	Clamp 2.25"
10	3	Clamp 3.00"
11	1	Heat Shield

Factory Ford shop manuals are available from Helm Publications, 1-800-782-4356

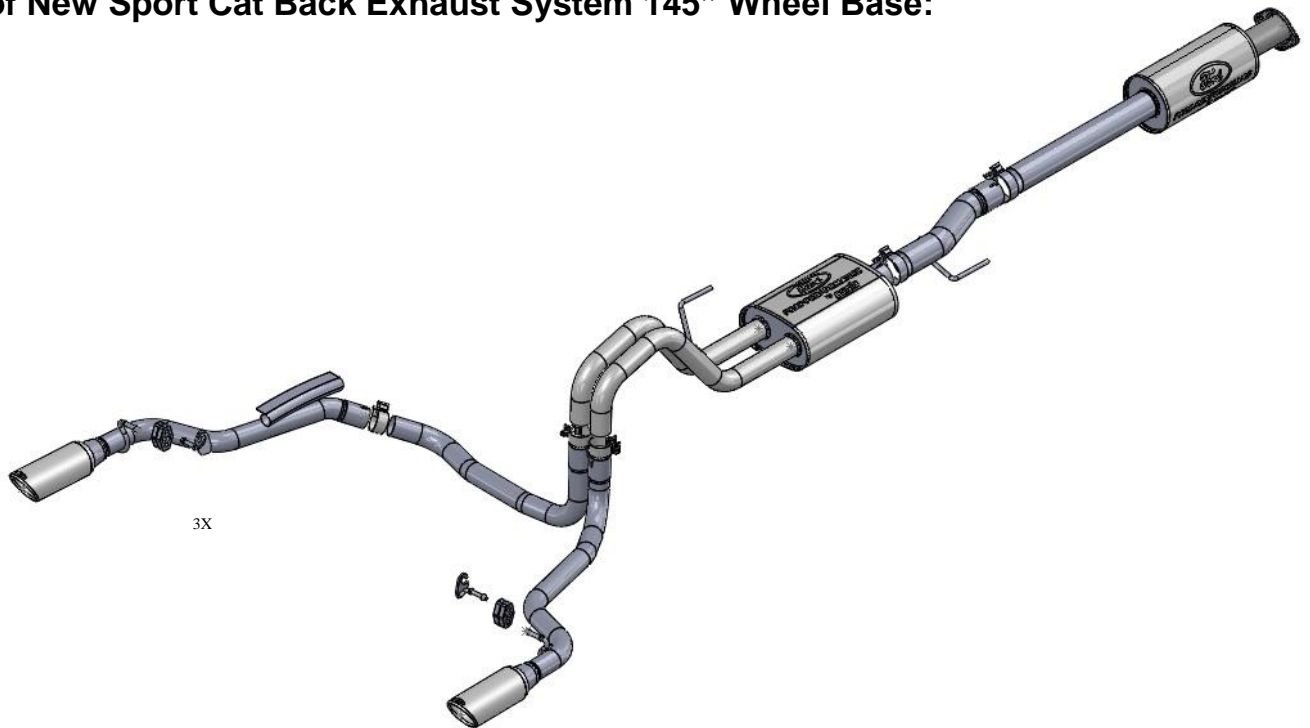


Part Numbers: M-5200-F1550DEBA/ECA/EFA/SBA/SCA/SFA/TBA/TCATFA
M-5200-F1535DEBA/ECA/EFA/SBA/SCA/SFA/TBA/TCATFA
2018 F-150 5.0L/3.5L Cat Back Exhaust System Rear Exit
INSTALLATION INSTRUCTIONS

Image of New Touring Cat Back Exhaust System 145" Wheel Base:



Image of New Sport Cat Back Exhaust System 145" Wheel Base:

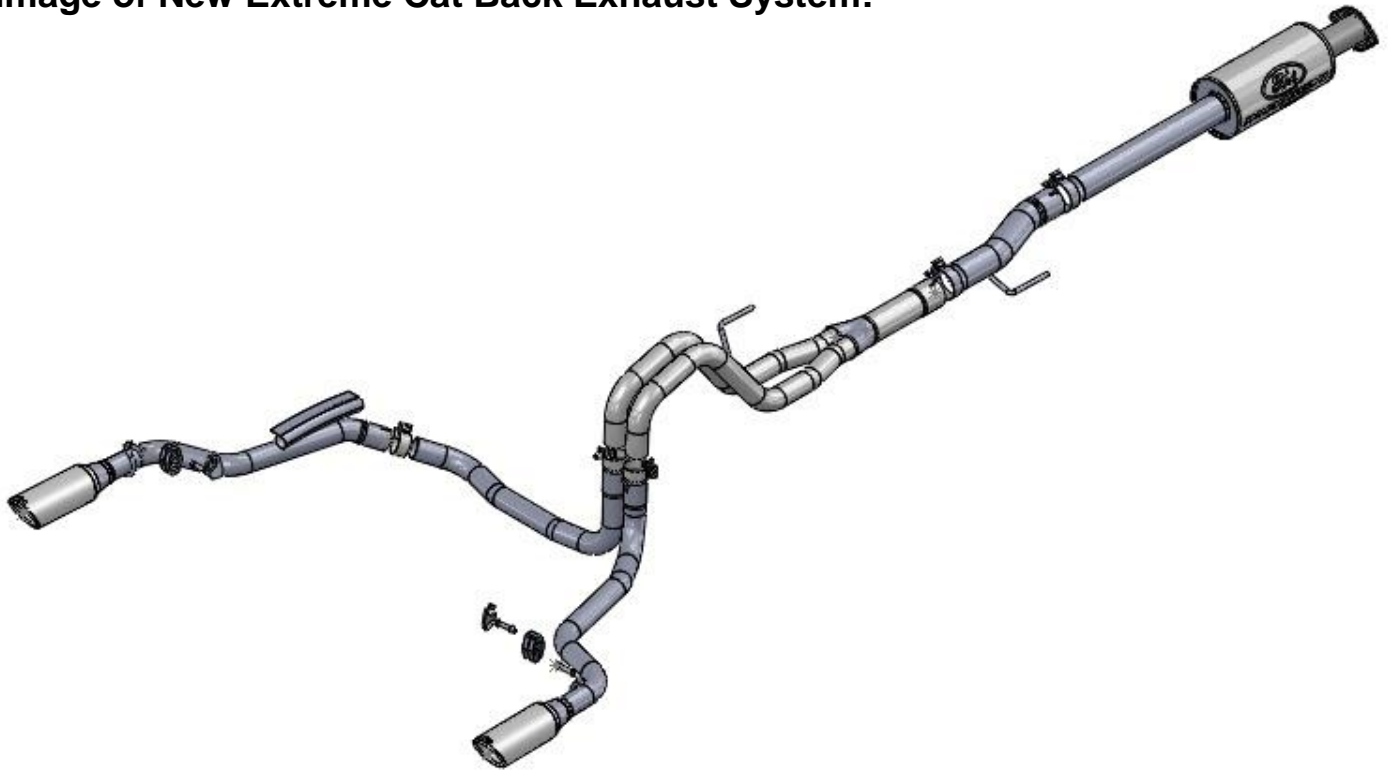


Factory Ford shop manuals are available from Helm Publications, 1-800-782-4356



Part Numbers: M-5200-F1550DEBA/ECA/EFA/SBA/SCA/SFA/TBA/TCATFA
M-5200-F1535DEBA/ECA/EFA/SBA/SCA/SFA/TBA/TCATFA
2018 F-150 5.0L/3.5L Cat Back Exhaust System Rear Exit
INSTALLATION INSTRUCTIONS

Image of New Extreme Cat Back Exhaust System:



Extension Pipe sold separately:

Part Number M-5248-F15157 for 157" wheelbase

Part Number M-5248-F15163 for 163" wheelbase



Note:

- 1. Determine the wheel base of your 2018 F-150.**
- 2. Immediately inventory your kit to ensure all of the necessary parts are included.**
- 3. Sport systems have a smaller mid-muffler.**
- 4. For the 141" and 122" wheelbase see last page before installing.**
- 5. Note: For 122" wheelbase, the Borla front pipe 56562 will need to be purchased through your dealer.**

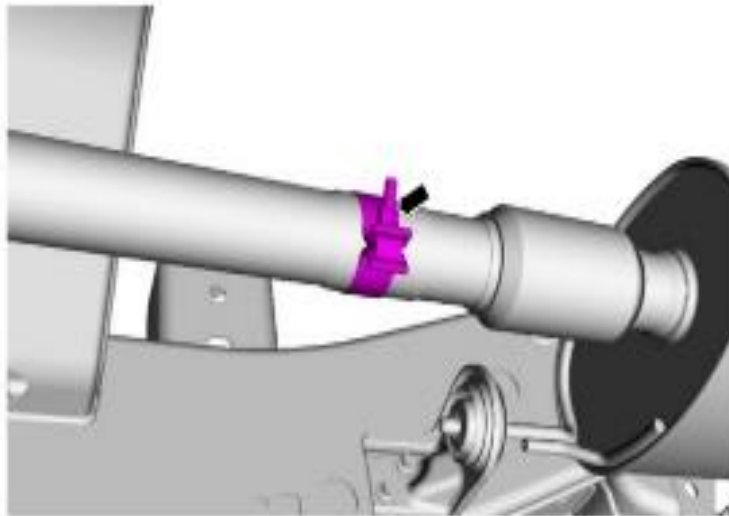
Factory Ford shop manuals are available from Helm Publications, 1-800-782-4356

REMOVAL INSTRUCTIONS:

STEP 1: With the vehicle in NEUTRAL, position it on a hoist.

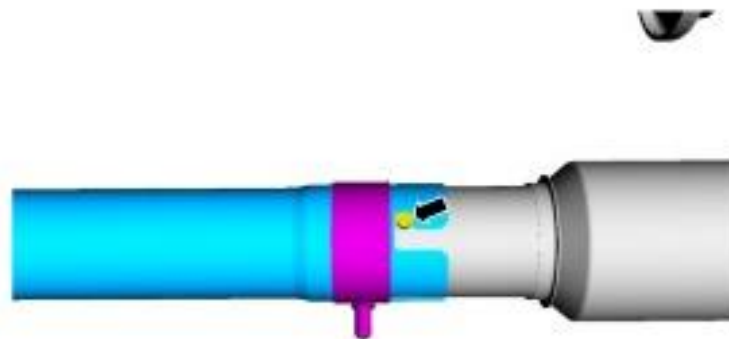
STEP 2: Loosen the clamp.

Torque: 35 lb.ft (48 Nm)



E1P125

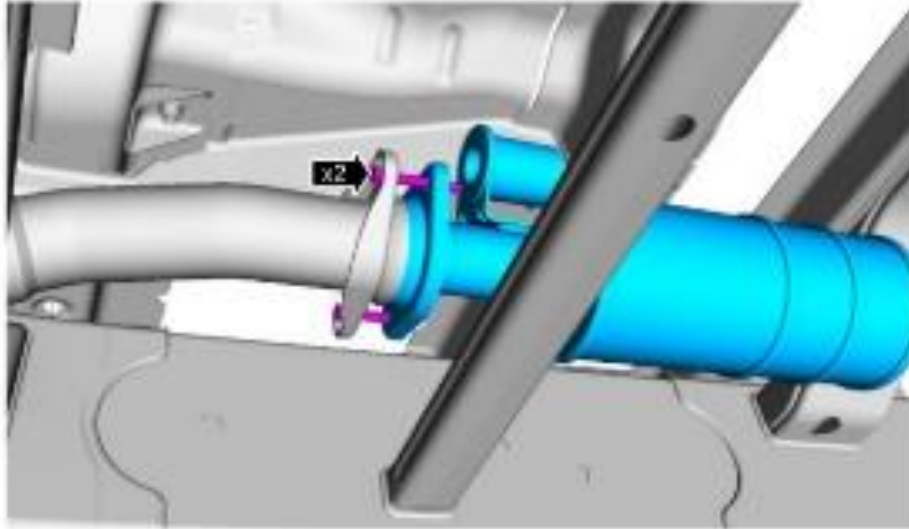
STEP 3: Release the locator tab out of the muffler inlet pipe.



E1P127

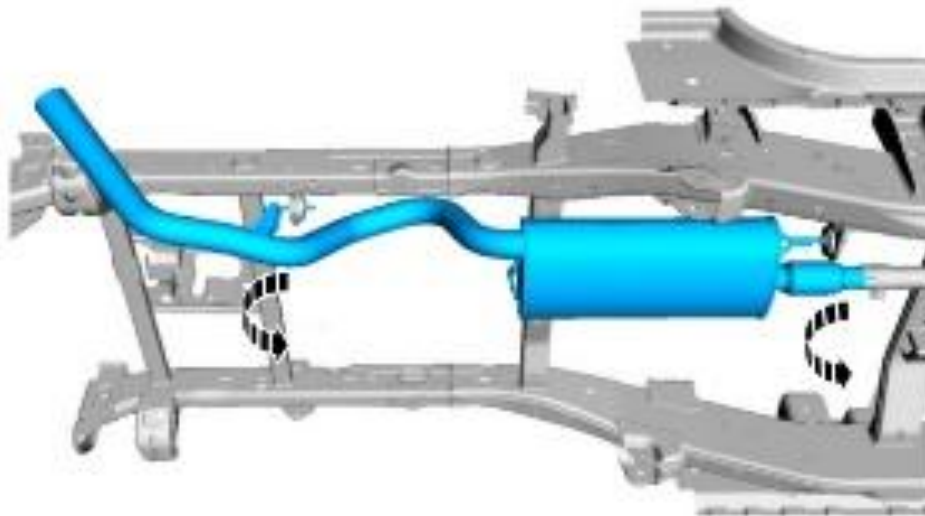
STEP 4: Remove the bolts and the muffler inlet pipe.

Torque: 30 lb.ft (40 Nm)



EP1316

STEP 5: Slide the muffler and tailpipe rearward out of the isolators and then forward to remove.



EP1316



Part Numbers: M-5200-F1550DEBA/ECA/EFA/SBA/SCA/SFA/TBA/TCATFA
M-5200-F1535DEBA/ECA/EFA/SBA/SCA/SFA/TBA/TCATFA
2018 F-150 5.0L/3.5L Cat Back Exhaust System Rear Exit
INSTALLATION INSTRUCTIONS

INSTALLATION INSTRUCTIONS:

STEP 1: Install the front muffler loosely.



STEP 2: Install the proper “Mid Pipe” for your wheel base. Be sure to slip a clamp onto the pipe, clamp to be tighten later.



Factory Ford shop manuals are available from Helm Publications, 1-800-782-4356

STEP 3: Install the short “S” pipe with hanger. Hanger to the rear of vehicle.



Step 4: Install the mid-muffler onto the hanger and slip into S-pipe.



Step 5: Install the heat shield provided.

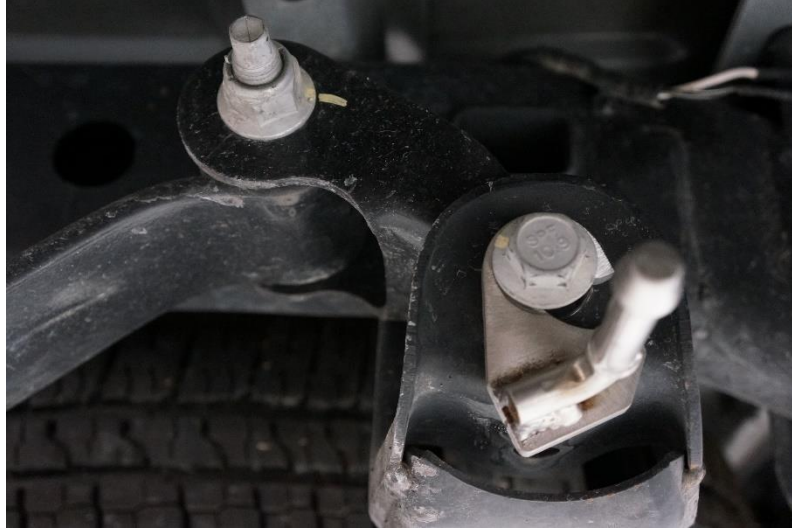


Step 6: From your kit find the Brackets with isolators. These will be installed onto the lower rear leaf spring shackle bolt.

Step 7: To install these hangers you will need a 21mm and a 24mm socket to loosen the lower shackle bolt without removing it. (Back shackle bolt out approximately 1/4") Slip the new hanger onto the bolt just behind the bolt head.



Step 8: Once installed be sure to torque the shackle bolt to 235 Nm (173 lb-ft)



Step 9: Using a 15mm socket begin tightening the exhaust clamps that are installed to this point. Position the clamp bolts to the top of the pipes to avoid the potential ground clearance issues. Ensure the mid-muffler is positioned in a way that it sits parallel to the bottom of the truck.



Step 10: Locate the right side tail pipe. Install one of the rubber exhaust isolators onto the hanger as shown in the second picture.

R/H tailpipe



Step 11: Install the left side intermediate pipe and tail pipe. Slide the clamps over the pipes prior to installing.





Part Numbers: M-5200-F1550DEBA/ECA/EFA/SBA/SCA/SFA/TBA/TCA/TFA
M-5200-F1535DEBA/ECA/EFA/SBA/SCA/SFA/TBA/TCA/TFA
2018 F-150 5.0L/3.5L Cat Back Exhaust System Rear Exit
INSTALLATION INSTRUCTIONS

Step 12: Align the right side tail pipe and tip and tighten.



Step 13: Align the left side tail pipe and tip and tighten.



Factory Ford shop manuals are available from Helm Publications, 1-800-782-4356



Part Numbers: M-5200-F1550DEBA/ECA/EFA/SBA/SCA/SFA/TBA/TCA/TFA
M-5200-F1535DEBA/ECA/EFA/SBA/SCA/SFA/TBA/TCA/TFA
2018 F-150 5.0L/3.5L Cat Back Exhaust System Rear Exit
INSTALLATION INSTRUCTIONS

Step 14: Once you are satisfied with your fitment torque all clamps to 48nm. (35 lb-ft)

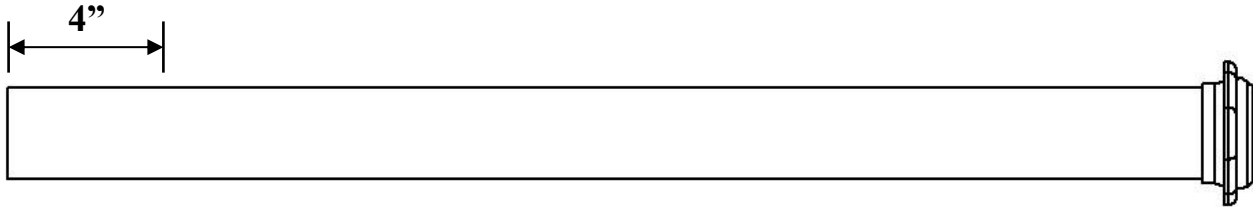


Factory Ford shop manuals are available from Helm Publications, 1-800-782-4356



Part Numbers: M-5200-F1550DEBA/ECA/EFA/SBA/SCA/SFA/TBA/TCATFA
M-5200-F1535DEBA/ECA/EFA/SBA/SCA/SFA/TBA/TCATFA
2018 F-150 5.0L/3.5L Cat Back Exhaust System Rear Exit
INSTALLATION INSTRUCTIONS

Note: For vehicles with a 141" wheelbase. Cut 4" off front pipe.



Note: For vehicles with a 122" wheelbase. Order Borla front pipe 56562 through your dealer.