



**Part Number: M-5200-F15RTB, F15RTC, F15RSB, F15RSC,
F15RTCF, F15RSCF**
**Part Description: 3.5L Ecoboost Raptor Exhaust Installation
Instructions**

NO PART OF THIS DOCUMENT MAY BE REPRODUCED WITHOUT PRIOR AGREEMENT AND WRITTEN PERMISSION OF
FORD PERFORMANCE PARTS

Please visit www.performanceparts.ford.com for the most current instruction and warranty information.

**PLEASE READ ALL OF THE FOLLOWING INSTRUCTIONS CAREFULLY PRIOR TO
INSTALLATION. AT ANY TIME YOU DO NOT UNDERSTAND THE INSTRUCTIONS, PLEASE
CALL THE FORD PERFORMANCE TECHLINE AT 1-800-367-3788**

*The use of a floor hoist is recommended for this installation. If you do not have access to one,
use a hydraulic floor jack and jack stands to raise the vehicle.*

**!!!CAUTION: JACK STANDS MUST BE USED ON A LEVEL SURFACE AND BE SECURELY
SEATED. FAILURE TO DO SO MAY RESULT IN PERSONAL INJURY OR VEHICLE DAMAGE!!!**

***** ATTENTION 133 Inch Wheel Base Owners *****

You will need to purchase THE Mid-Pipe p/n **M-5248-F15R133** to install this Exhaust Kit.



Factory Ford shop manuals are available from Helm Publications, 1-800-782-4356



Part Number: M-5200-F15RTB, F15RTC, F15RSB, F15RSC, F15RTCF, F15RSCF
Part Description: 3.5L Ecoboost Raptor Exhaust Installation Instructions

NO PART OF THIS DOCUMENT MAY BE REPRODUCED WITHOUT PRIOR AGREEMENT AND WRITTEN PERMISSION OF FORD PERFORMANCE PARTS

!!! IMPORTANT!!! Before starting the Installation of your New Ford Performance Exhaust system, it is highly suggested that the contents of the package are unpacked, inventoried and inspected. It is also recommended that the Installer Pre-fit the system on the floor. This will allow the Installer to find any fitment discrepancies prior to starting the Installation in the Vehicle.

Kit Includes

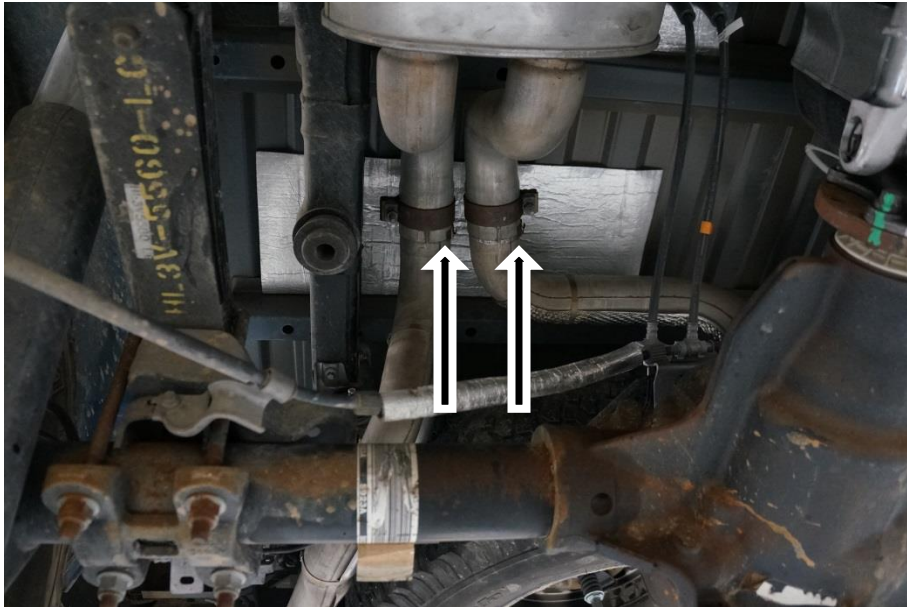
- 8- Band Clamps
- 1- Resonator
- 2- Mid-Pipes
- 1- Muffler Pack
- 1- RH Tailpipe with Tip
- 1- LH Tailpipe with Tip
- 1- Crossover Pipe

Factory Ford shop manuals are available from Helm Publications, 1-800-782-4356

**Part Number: M-5200-F15RTB, F15RTC, F15RSB, F15RSC,
F15RTCF, F15RSCF**
**Part Description: 3.5L EcoBoost Raptor Exhaust Installation
Instructions**

NO PART OF THIS DOCUMENT MAY BE REPRODUCED WITHOUT PRIOR AGREEMENT AND WRITTEN PERMISSION OF
FORD PERFORMANCE PARTS

1. Remove the Stock Exhaust System starting from the rear of the Vehicle.



- Loosen the Tail Pipe Clamps located above the Rear Axle Housing (15mm Socket or Wrench). Also, relieve the locator pin clips at this time. The Tail Pipes cannot be removed without the clips undone from the Orientation Pins. (see arrows for Pin Locations)



- Remove the Left and Right Tail Pipe Hangers from the Frame Rail beside the Spare tire (10mm Wrench or Socket)

Factory Ford shop manuals are available from Helm Publications, 1-800-782-4356

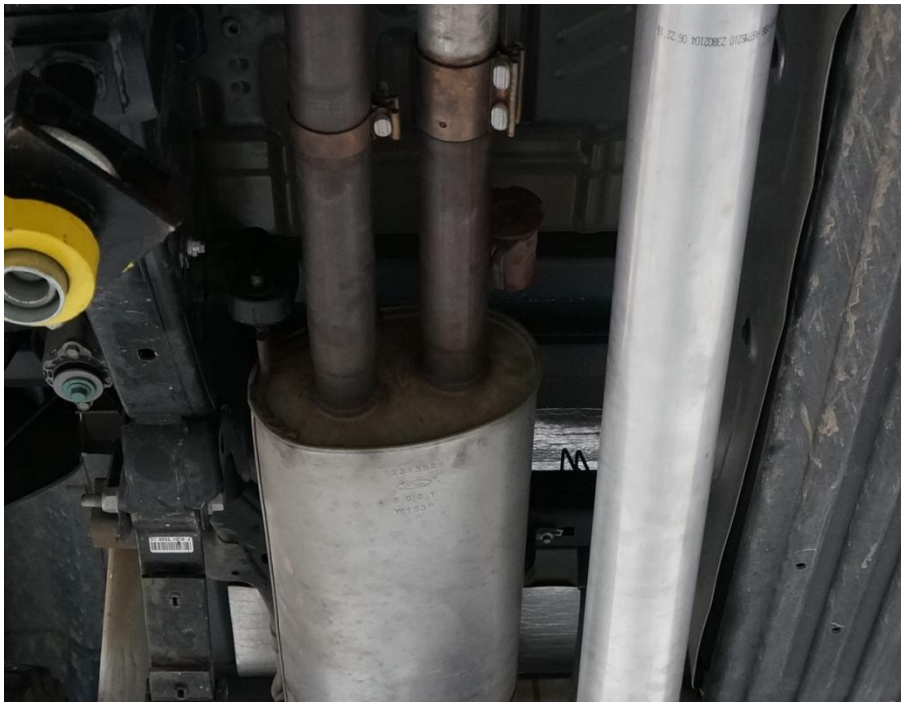


**Part Number: M-5200-F15RTB, F15RTC, F15RSB, F15RSC,
F15RTCF, F15RSCF**
**Part Description: 3.5L Ecoboost Raptor Exhaust Installation
Instructions**

NO PART OF THIS DOCUMENT MAY BE REPRODUCED WITHOUT PRIOR AGREEMENT AND WRITTEN PERMISSION OF
FORD PERFORMANCE PARTS



- Remove the Left and Right Tail Pipe Tip Hangers from the Rear Bumper Bracket (**10mm Wrench or Socket**)
- Remove the Tail Pipes



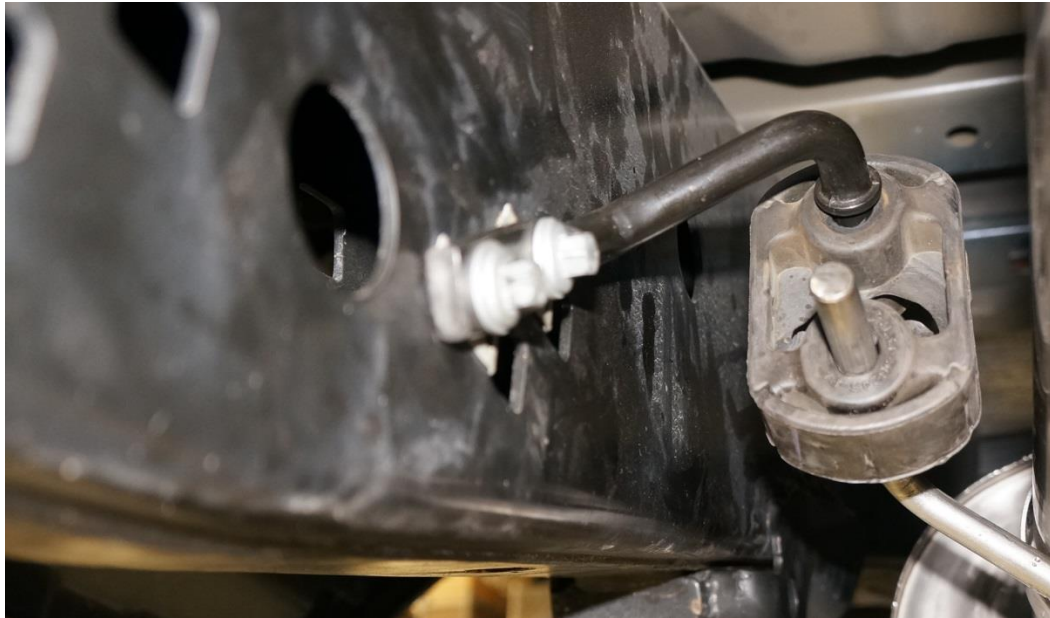
Factory Ford shop manuals are available from Helm Publications, 1-800-782-4356



Part Number: M-5200-F15RTB, F15RTC, F15RSB, F15RSC, F15RTCF, F15RSCF
Part Description: 3.5L Ecoboost Raptor Exhaust Installation Instructions

NO PART OF THIS DOCUMENT MAY BE REPRODUCED WITHOUT PRIOR AGREEMENT AND WRITTEN PERMISSION OF FORD PERFORMANCE PARTS

- Loosen the Two (2) Clamps ahead of the Muffler (**15mm Wrench or Socket**)



- Remove the Muffler Side Hanger Bolts (2) (**10mm Wrench or Socket**)

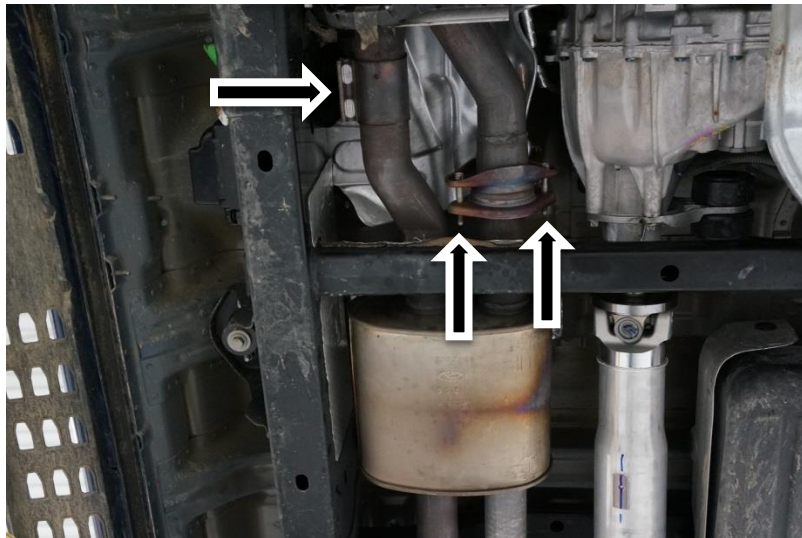


Factory Ford shop manuals are available from Helm Publications, 1-800-782-4356

**Part Number: M-5200-F15RTB, F15RTC, F15RSB, F15RSC,
F15RTCF, F15RSCF**
**Part Description: 3.5L Ecoboost Raptor Exhaust Installation
Instructions**

NO PART OF THIS DOCUMENT MAY BE REPRODUCED WITHOUT PRIOR AGREEMENT AND WRITTEN PERMISSION OF
FORD PERFORMANCE PARTS

- With the assistance of a Helper to support the Muffler, Remove the Muffler Rear Mount (10mm Wrench or Socket).
- Slide the Muffler Rearward and remove the Muffler.



- Loosen the Two (2) Band Clamp Nuts (**15mm Wrench or Socket**).
 - Remove the Two (2) Flange Bolts (**13mm Wrench or Socket**) and remove the Resonator.
1. Transfer **ALL** of the Exhaust Hangers over to the New Ford Performance Exhaust System.

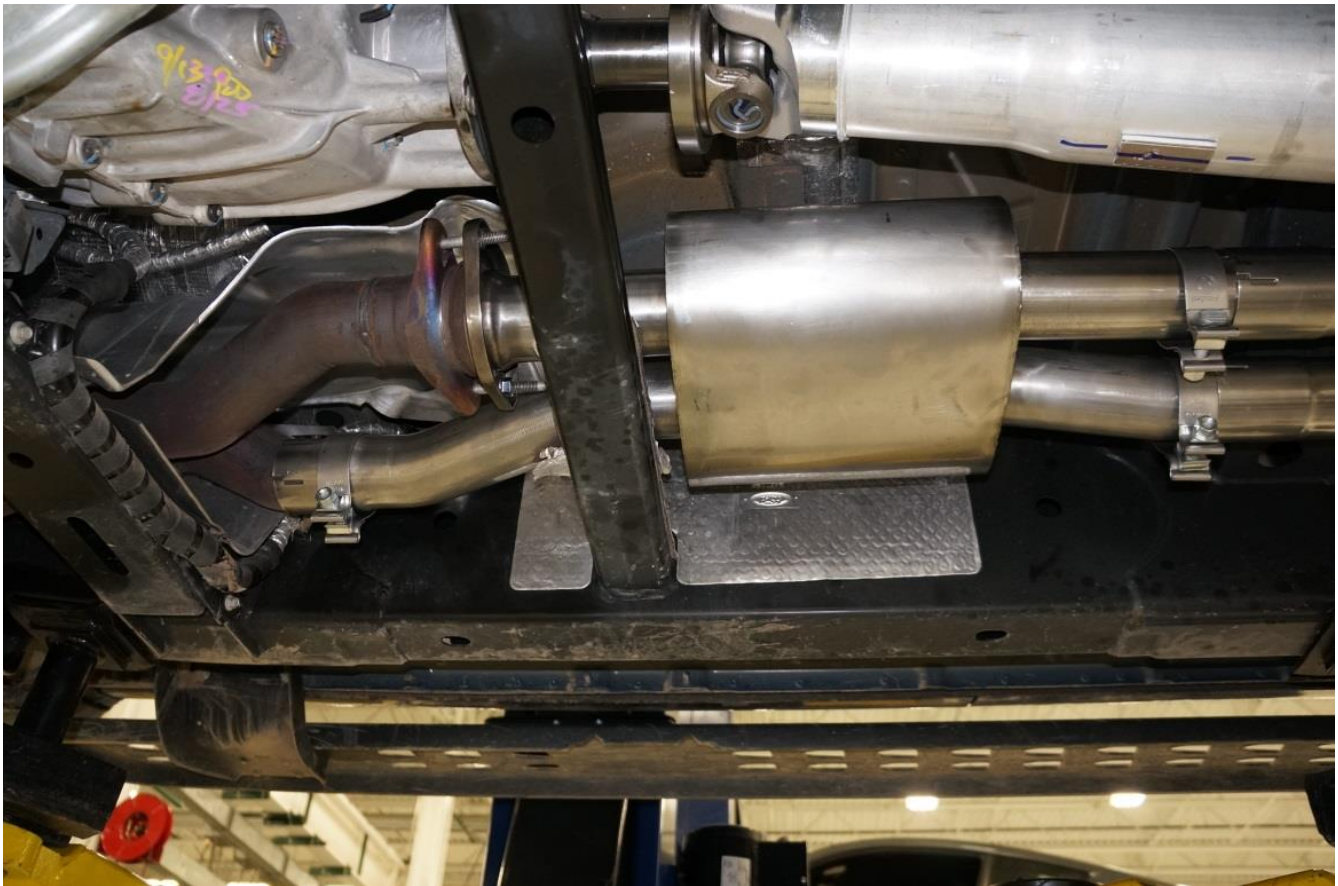
!!! TIP !!! During Installation, pay close attention to the orientation of the Exhaust Clamps. Proper orientation will make tightening the System much easier as well as create a clean Installation.

2. Install the New Ford Performance Exhaust System.



Part Number: M-5200-F15RTB, F15RTC, F15RSB, F15RSC, F15RTCF, F15RSCF
Part Description: 3.5L Ecoboost Raptor Exhaust Installation Instructions

NO PART OF THIS DOCUMENT MAY BE REPRODUCED WITHOUT PRIOR AGREEMENT AND WRITTEN PERMISSION OF FORD PERFORMANCE PARTS

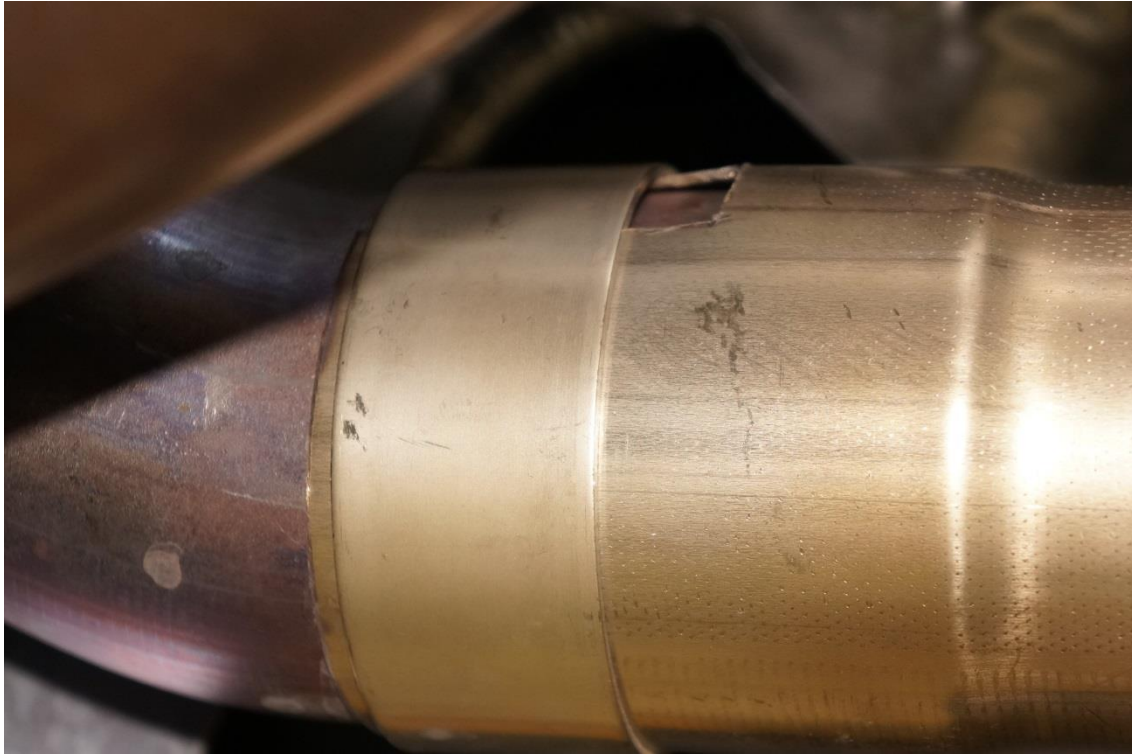


- Slide one of the provided clamps over the Non-Flanged Inlet Pipes. Position the Clamp with the Nut facing down and to the outside of the Vehicle. Use the Original two (2) Flange Bolts to attach the Resonator.
- Start to tighten the Flange Bolts **EVENLY**. Have an Assistant hold the Resonator in a position that provides equal clearance between the Inlet Pipes and the Frame Cross Member. Failure to do this could result in contact between the Exhaust and the Frame.
Torque; 30 ft/lb. (40Nm.)

Factory Ford shop manuals are available from Helm Publications, 1-800-782-4356

**Part Number: M-5200-F15RTB, F15RTC, F15RSB, F15RSC,
F15RTCF, F15RSCF**
**Part Description: 3.5L Ecoboost Raptor Exhaust Installation
Instructions**

NO PART OF THIS DOCUMENT MAY BE REPRODUCED WITHOUT PRIOR AGREEMENT AND WRITTEN PERMISSION OF
FORD PERFORMANCE PARTS

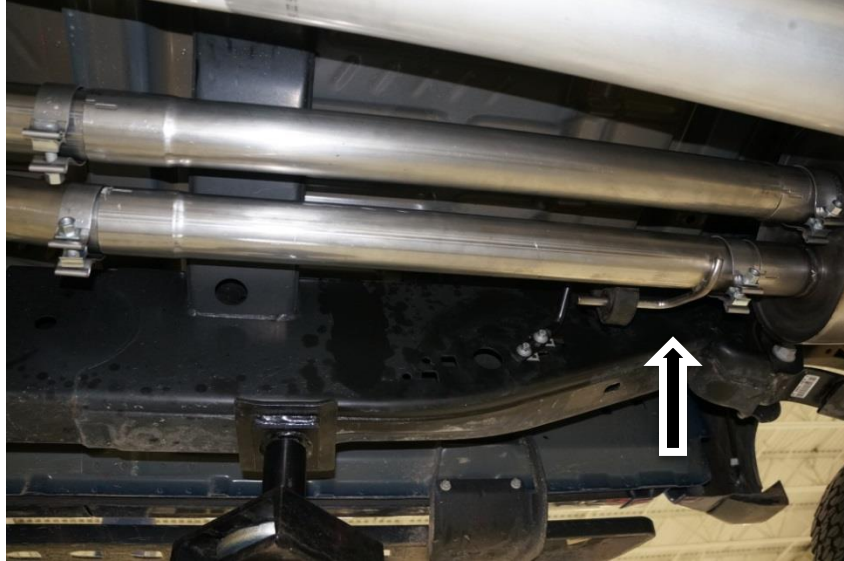


IMPORTANT NOTE!!!! Pay VERY close attention to the Inlet Tube Orientation Keyway. The above Picture shows that the Band Clamp needs to be slid back in order to cover this area. Also important is to be sure the Pipe Clamp Nut and Bolt are never over a relief cut. Please take extra time to ensure these areas are well secured.

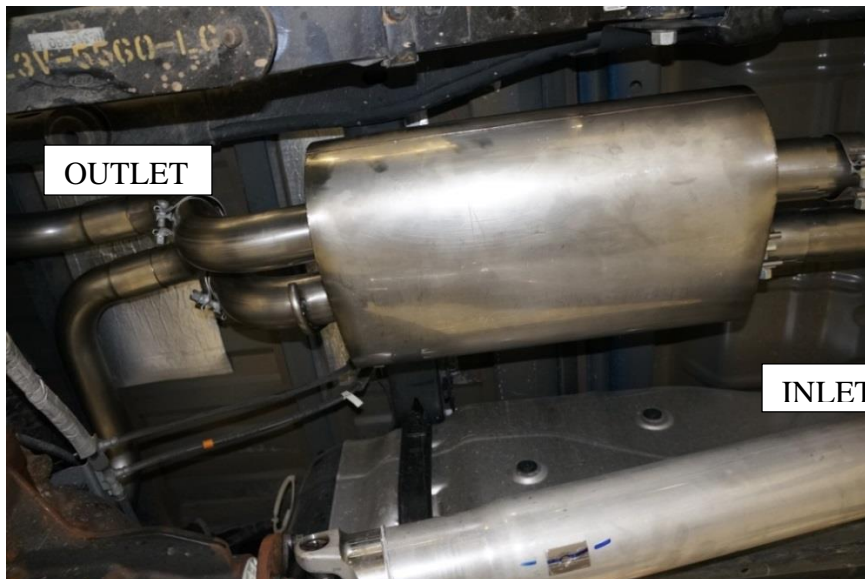
- Tighten the Inlet Pipe Band Clamp with the Nut facing down.
Torque; 35 ft/lb. (48 Nm.)
- Slide Two (2) more Clamps over the Resonator Outlet Pipes with the Clamp Nuts to the outside and down.

**Part Number: M-5200-F15RTB, F15RTC, F15RSB, F15RSC,
F15RTCF, F15RSCF**
**Part Description: 3.5L EcoBoost Raptor Exhaust Installation
Instructions**

NO PART OF THIS DOCUMENT MAY BE REPRODUCED WITHOUT PRIOR AGREEMENT AND WRITTEN PERMISSION OF
FORD PERFORMANCE PARTS



- Install the Mid Pipes. One Mid Pipe will Have an Exhaust Hanger, one will not. The one WITH the Hanger goes to the outside of the Vehicle. (see Arrow). **Do not tighten the Clamps at this time.**



- Slide another Two (2) Clamps over the Muffler Inlets. Position the Clamp with the Nut facing down and to the outside of the Vehicle. With the help of an Assistant, Install the Muffler by putting the Muffler Outlets OVER the Rear Axle first. Then Align the Muffler Inlets with the Mid Pipes and slide the Muffler Forward. Install the Muffler Rear Hanger with the original Bolt.
Torque; 35 ft/lb (48 Nm.)

Factory Ford shop manuals are available from Helm Publications, 1-800-782-4356

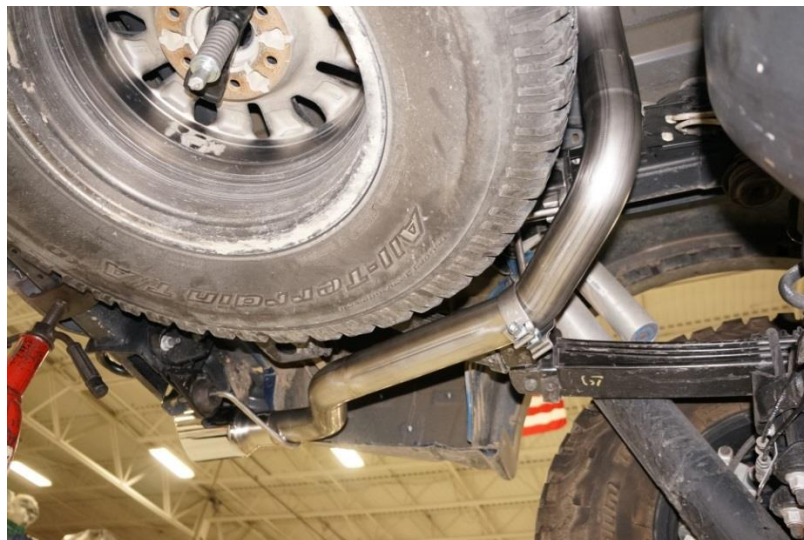
**Part Number: M-5200-F15RTB, F15RTC, F15RSB, F15RSC,
F15RTCF, F15RSCF**
**Part Description: 3.5L Ecoboost Raptor Exhaust Installation
Instructions**

NO PART OF THIS DOCUMENT MAY BE REPRODUCED WITHOUT PRIOR AGREEMENT AND WRITTEN PERMISSION OF
FORD PERFORMANCE PARTS

- Install the Mid Pipe Exhaust Hanger to the Frame Rail.



- Slide two (2) Clamps over the Muffler Outlet Pipes with the Nuts Facing outward and down. Install the Cross over Pipe to the Left Muffler outlet Pipe. Do not tighten the Clamp.



- Slide a Clamp onto the Left Side Tail Pipe. Position the Clamp with the Nut facing the Front of the Vehicle. Install the Tail Pipe to the Cross Over Pipe. Attach the Tail Pipe Exhaust Hanger to the Left Side Frame rail and tighten. Install the Tail Pipe Tip Hanger but, do not tighten.
- Repeat for the Right Side Tail Pipe.

Factory Ford shop manuals are available from Helm Publications, 1-800-782-4356



Part Number: M-5200-F15RTB, F15RTC, F15RSB, F15RSC, F15RTCF, F15RSCF
Part Description: 3.5L Ecoboost Raptor Exhaust Installation Instructions

NO PART OF THIS DOCUMENT MAY BE REPRODUCED WITHOUT PRIOR AGREEMENT AND WRITTEN PERMISSION OF FORD PERFORMANCE PARTS

NOTE: Watch for adequate clearance between the Tail Pipes and the Leaf Spring.

- At this time, tighten all of the Exhaust Hanger Brackets to the proper Torque **EXCEPT** the Rear Tip Hangers.
Torque: 35 ft/lb (48 Nm.)
- Starting with the Mid Pipes, Push each section of the System as far forward as possible. You will know it is all the way forward when the Exhaust Tips line up with the bottom of the Bumper as pictured below.



Factory Ford shop manuals are available from Helm Publications, 1-800-782-4356



**Part Number: M-5200-F15RTB, F15RTC, F15RSB, F15RSC,
F15RTCF, F15RSCF**
**Part Description: 3.5L Ecoboost Raptor Exhaust Installation
Instructions**

NO PART OF THIS DOCUMENT MAY BE REPRODUCED WITHOUT PRIOR AGREEMENT AND WRITTEN PERMISSION OF
FORD PERFORMANCE PARTS



- Tighten the Rear Exhaust Tip Hangers with the bottom of the Bracket Flush with the Bumper Bracket
- Tighten all of the Exhaust Clamps and Torque
Torque: 35 ft/lb (48 Nm.)

Factory Ford shop manuals are available from Helm Publications, 1-800-782-4356



**Part Number: M-5200-F15RTB, F15RTC, F15RSB, F15RSC,
F15RTCF, F15RSCF**
**Part Description: 3.5L Ecoboost Raptor Exhaust Installation
Instructions**

NO PART OF THIS DOCUMENT MAY BE REPRODUCED WITHOUT PRIOR AGREEMENT AND WRITTEN PERMISSION OF
FORD PERFORMANCE PARTS



- View the Vehicle from behind. Visually check the Gap between the Bumper Reliefs and the Exhaust Tips. Measuring the Gap is preferred. If needed, loosen the rear Exhaust Tip Hangers, make the necessary adjustment and tighten to the proper Torque. Check the Gap again. Repeat if needed.
Torque; 35 ft/lb (48 Nm.)
- Re-tighten all of the Exhaust System Clamps to the Proper Torque after 300 Miles.

Factory Ford shop manuals are available from Helm Publications, 1-800-782-4356