



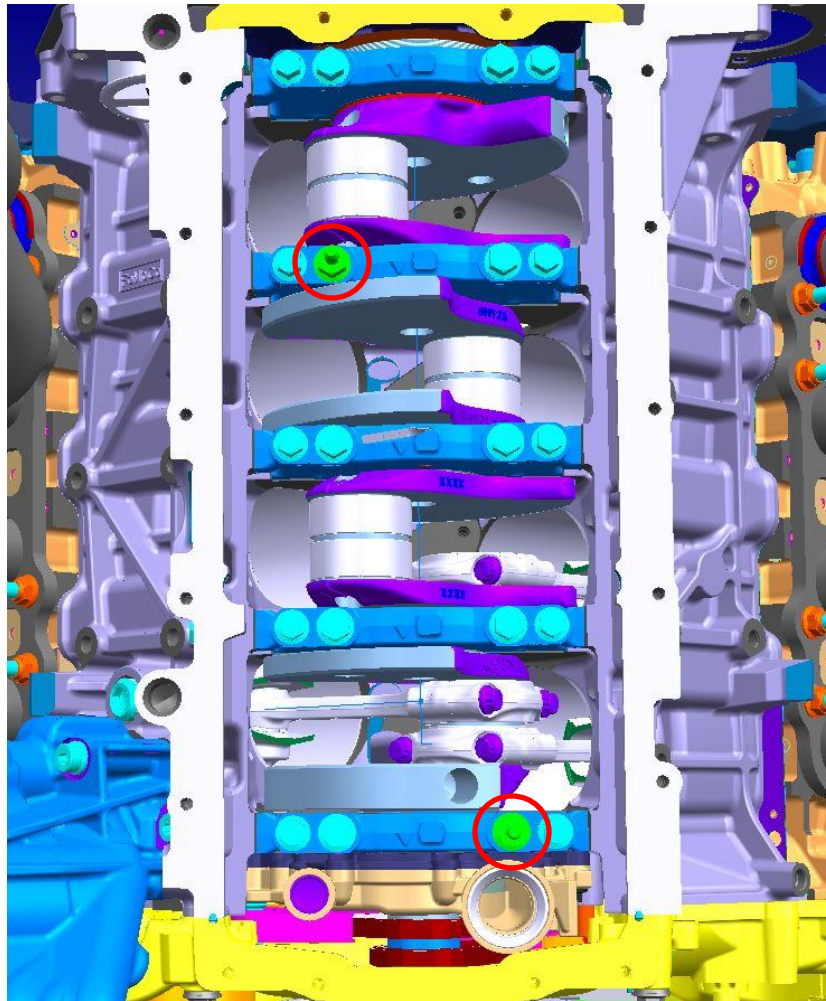
FORD PERFORMANCE

## M-6622-M52RR oil pick-up tube

NO PART OF THIS DOCUMENT MAY BE REPRODUCED WITHOUT PRIOR AGREEMENT AND WRITTEN PERMISSION OF FORD PERFORMANCE PARTS

Please visit [www.performanceparts.ford.com](http://www.performanceparts.ford.com) for the most current instruction and warranty information.

**PLEASE READ ALL OF THE FOLLOWING INSTRUCTIONS CAREFULLY PRIOR TO INSTALLATION. AT ANY TIME YOU DO NOT UNDERSTAND THE INSTRUCTIONS, PLEASE CALL THE FORD PERFORMANCE TECHLINE AT 1-800-367-3788**



- 1) Remove two inner main bolts in the locations above.
- 2) Install and torque two BR3Z-6345-A studbolts to 65Nm + 90°

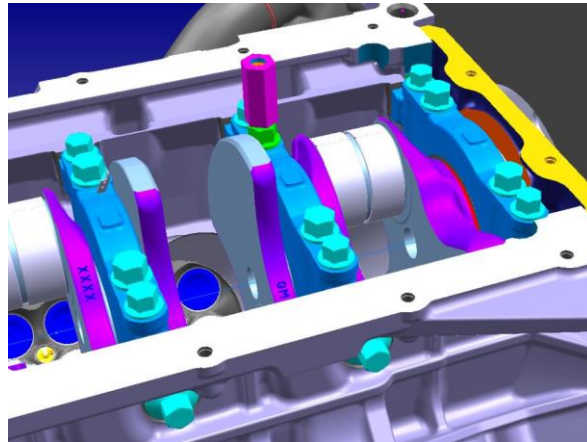
Factory Ford shop manuals are available from Helm Publications, 1-800-782-4356



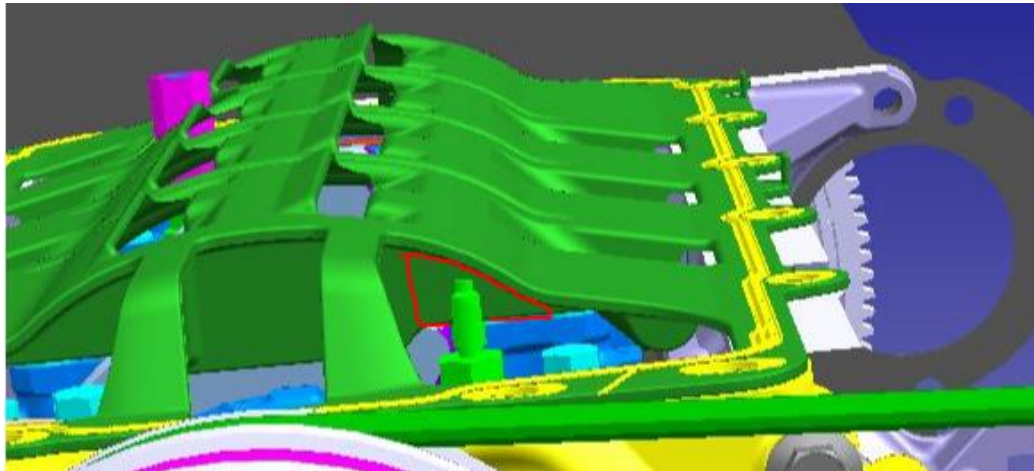
FORD PERFORMANCE

## M-6622-M52RR oil pick-up tube

NO PART OF THIS DOCUMENT MAY BE REPRODUCED WITHOUT PRIOR AGREEMENT AND WRITTEN PERMISSION OF FORD PERFORMANCE PARTS



- 3) Install oil pick-up tube spacer on rear main studbolt and torque to 21-28Nm (17mm hex).



- 4) Remove material in windage tray area outlined above (to clear main studbolt).
- 5) Install windage tray on block.

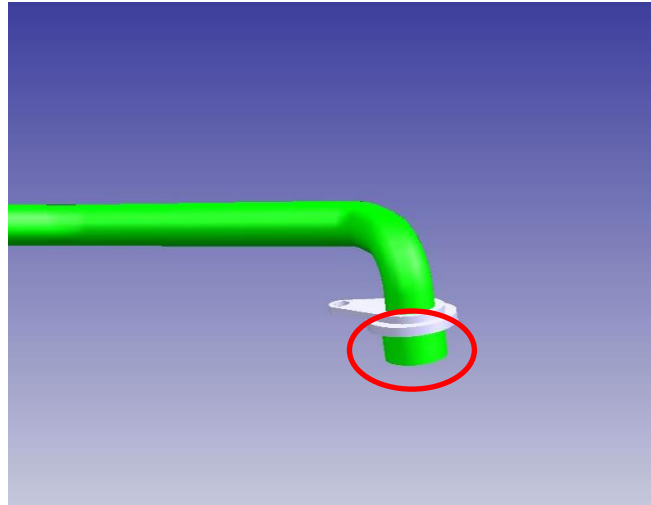
Factory Ford shop manuals are available from Helm Publications, 1-800-782-4356



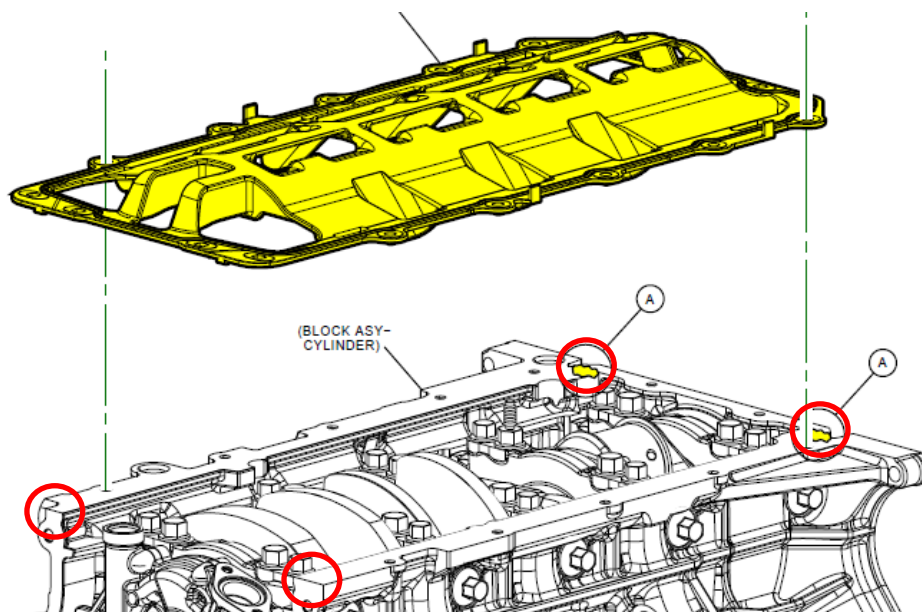
FORD PERFORMANCE

## M-6622-M52RR oil pick-up tube

NO PART OF THIS DOCUMENT MAY BE REPRODUCED WITHOUT PRIOR AGREEMENT AND WRITTEN PERMISSION OF FORD PERFORMANCE PARTS



- 6) Lubricate oil pick-up tube with engine oil and slowly press into grommet of oil pump while aligning bracket over front main studbolt. Windage tray may need to be held up in order to install pick-up tube.
- 7) Install bolt into rear pick-up tube bracket to spacer, but do not torque at this time.
- 8) Install nut on front main studbolt and run down with wrench or socket and torque to 20Nm. Windage tray may need to be held up to access nut.
- 9) Final torque bolt into rear pick-up tube bracket to 21-28Nm.



- 10) While holding windage tray up off cyl block, apply RTV dots in the 4 positions as illustrated above.

Factory Ford shop manuals are available from Helm Publications, 1-800-782-4356